

# 320 — 322 SOUTH MAIN STREET

Verona, Wisconsin | 53593

OFFICE/RETAIL  
SPACE FOR LEASE

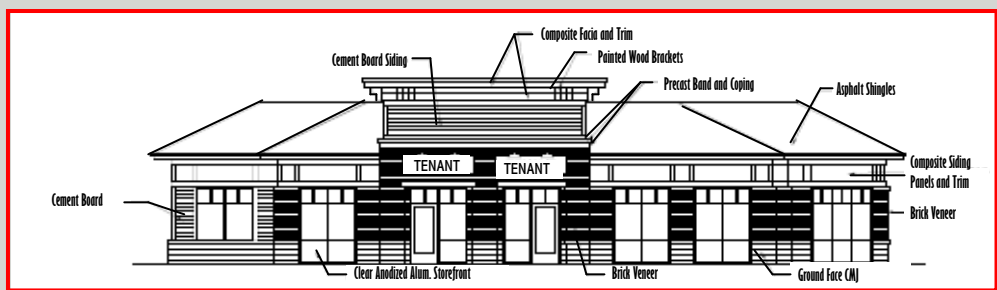
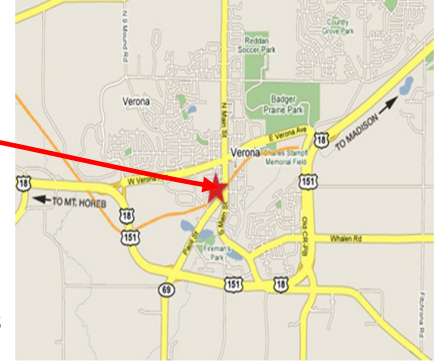
*Excellent*

*Main Street*

*Verona Location*

## PROPERTY FEATURES:

- New City Centre Verona Retail Building
- Onsite Parking of 26 stalls
- 1,300-4,000 sf Available
- Energy Efficient New Construction
- Adjacent to Military Ridge Bike Path



For further information  
contact: \_\_\_\_\_

David Keller\*  
T 608-227-6543 Ext. 102  
F 608-255-5005  
David@KellerRealEstateGroup.com  
\*Broker owned.

[www.KellerRealEstateGroup.com](http://www.KellerRealEstateGroup.com)  
[www.CityCentreVerona.com](http://www.CityCentreVerona.com)

DEMOGRAPHICS:	1 Mile	3 Mile	5 Mile
Population:	8,319	23,923	64,320
Avg. HH Income	\$90,439	\$93,038	\$88,132

## TRAFFIC COUNTS:

S. Main Street, Verona ..... 11,200 (2005) ADT\*  
\*Average Daily Traffic